



Welcome To

Japanese  
Cultural Festival  
And Night 2025



日本研究会

NUS Japanese Studies Society

日本研究会

NUS, Faculty of Arts & Social Sciences, Block AS8, Level 15, 10 Kent Ridge Crescent,  
Singapore 119260

# Tsubasa



Get ready to soar at JCFN 2025, with this year's theme being 翼 (Tsubasa), or 'Wings' in Japanese, which symbolizes the boundless pursuit of dreams and freedom. With its elegant outstretched wings, the graceful crane perfectly embodies the Tsubasa theme. Much like these majestic birds, we invite you to take flight and experience the boundless wonder of Japanese culture at this annual celebration. Embrace the Tsubasa spirit, spread your wings, and soar to new heights at JCFN!

## Stage Schedule

Time	Performers
11.30am	Stage opening
11.45am	Odoro!!
12.10pm	JMC #1
12.40pm	Break
1.00pm	Welcome Speech and the Ambassadors Address
1.50pm	JMC #2
2.25pm	HS.Joysu
3.00pm	NUS Nihon Buyo
3.25pm	Break
4.00pm	NUS KotoKottoN
4.50pm	JMC #3
5.20pm	Stage end

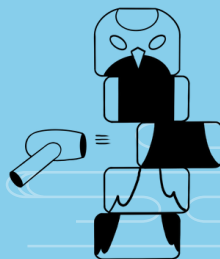
# Booth Stamps



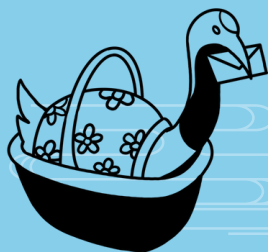
Redemption Booth



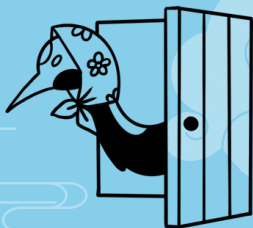
Quiz Rush



Daruma Otoshi



A Tsuru's Message  
#1



A Tsuru's Message  
#2



A Tsuru's Message  
#3



Japanese  
Calligraphy



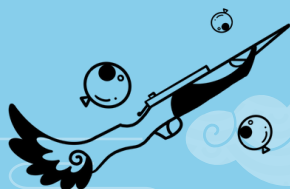
Wanage



Teru Teru Bozu



Yoyo-tsuru



Shateki

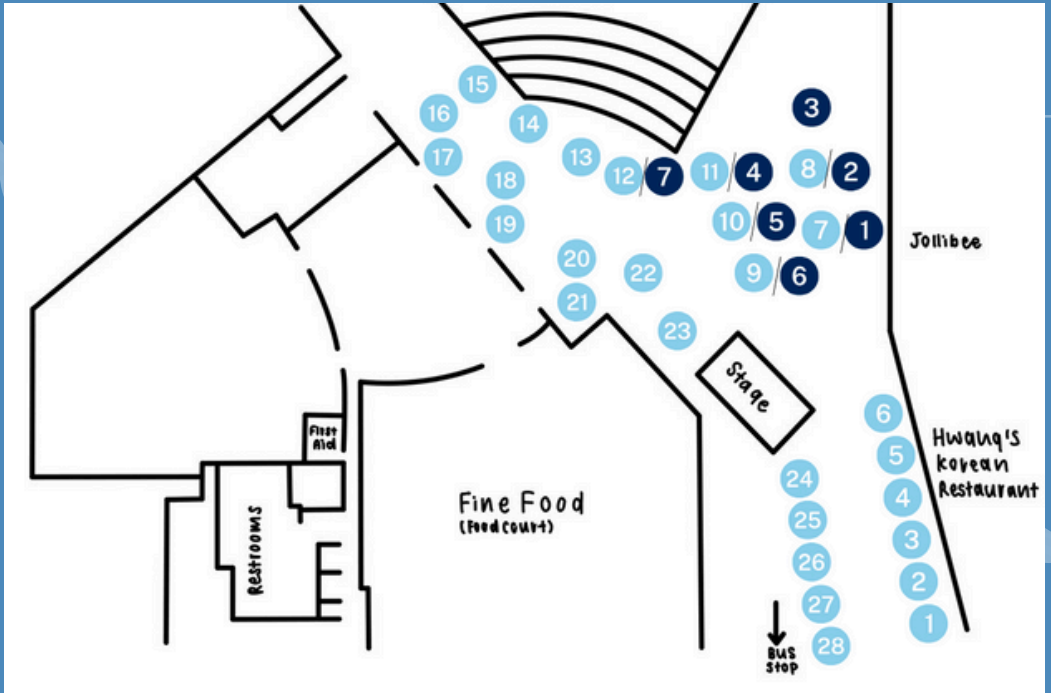


Suupaa Boru Sukui



Tsubasa Hiroi

# Event Map



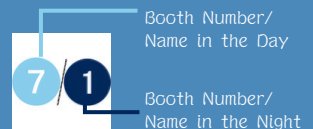
## Day Booths

- |                          |                     |
|--------------------------|---------------------|
| 1. Welcome Booth         | 16. Wanage          |
| 2. Redemption booth      | 17. Calligraphy     |
| 3. JSS Shirt Sales       | 18. Shateki         |
| 4. Origami               | 19. Teru-teru Bozu  |
| 5. Yukata                | 20. Tsubasa Hiroi   |
| 6. Photo booth           | 21. Daruma Otoshi   |
| 7. Yoyo-tsuru            | 22. Sado            |
| 8. Supaa Boru Sukui      | 23. Momiji Workshop |
| 9. Quiz Rush             | 24. Yakult          |
| 10. NTU JAC              | 25. Nissin          |
| 11. Karate               | 26. HGRO            |
| 12. NUSCAS               | 27. J.Claire        |
| 13-15. A Tsuru's Message | 28. Kagome          |

## Night Booths

1. Yukata
2. Photo Booth
3. Calligraphy
4. Supaa Boru Sukui
5. Yoyo-Tsuru
6. Shateki
7. Omen Workshop

## Legend



Booth Number/  
Name in the Day

Booth Number/  
Name in the Night

# Sponsors & Collaborators



# Omen Workshop

Japanese masks, known as “Omen”, are a staple of the traditional arts, often featured in Noh theatres, representing a variety of characters and creatures.

With the help of our skilled volunteers, you too can learn how to make one of these beautiful masks, at our very own Omen Workshop! Join us at **UTown Plaza from 6pm-7pm**, and you will get the chance to create and bring home your very own Omen!



# Tsubasa



At JCFN 2025, we take flight under the wings of つばさ (Tsubasa)!, which means wings in Japanese, symbolizing the freedom to soar and explore the boundless beauty of Japan's rich culture. Our mascot, the crane, known for its grace and longevity in Japanese folklore, embodies this spirit of liberation. Just as the crane takes flight, we invite you to spread your wings, immerse yourself in the vibrant traditions, and experience Japan culture. From ancient customs to modern innovations, JCFN 2025 offers an unforgettable journey through the heart of Japanese culture. So, spread your wings with us and let the celebration of freedom, beauty, and tradition take you to new heights!

## Stage Schedule

Time	Performers
6.30pm	Stage opening
6.40pm	NUS KotoKotton
7.05pm	Karate
7.25pm	NP Taiko
7.55pm	Odoro!!
8.20pm	Wotagei
8.55pm	JMC
9.15pm	Stage close



Welcome To



Japanese  
Cultural Festival  
And Night 2025



日本研究会  
NUS Japanese Studies Society

日本研究会 NUS, Faculty of Arts & Social Sciences, Block AS8, Level 3, 10 Kent Ridge Crescent, Singapore 119260